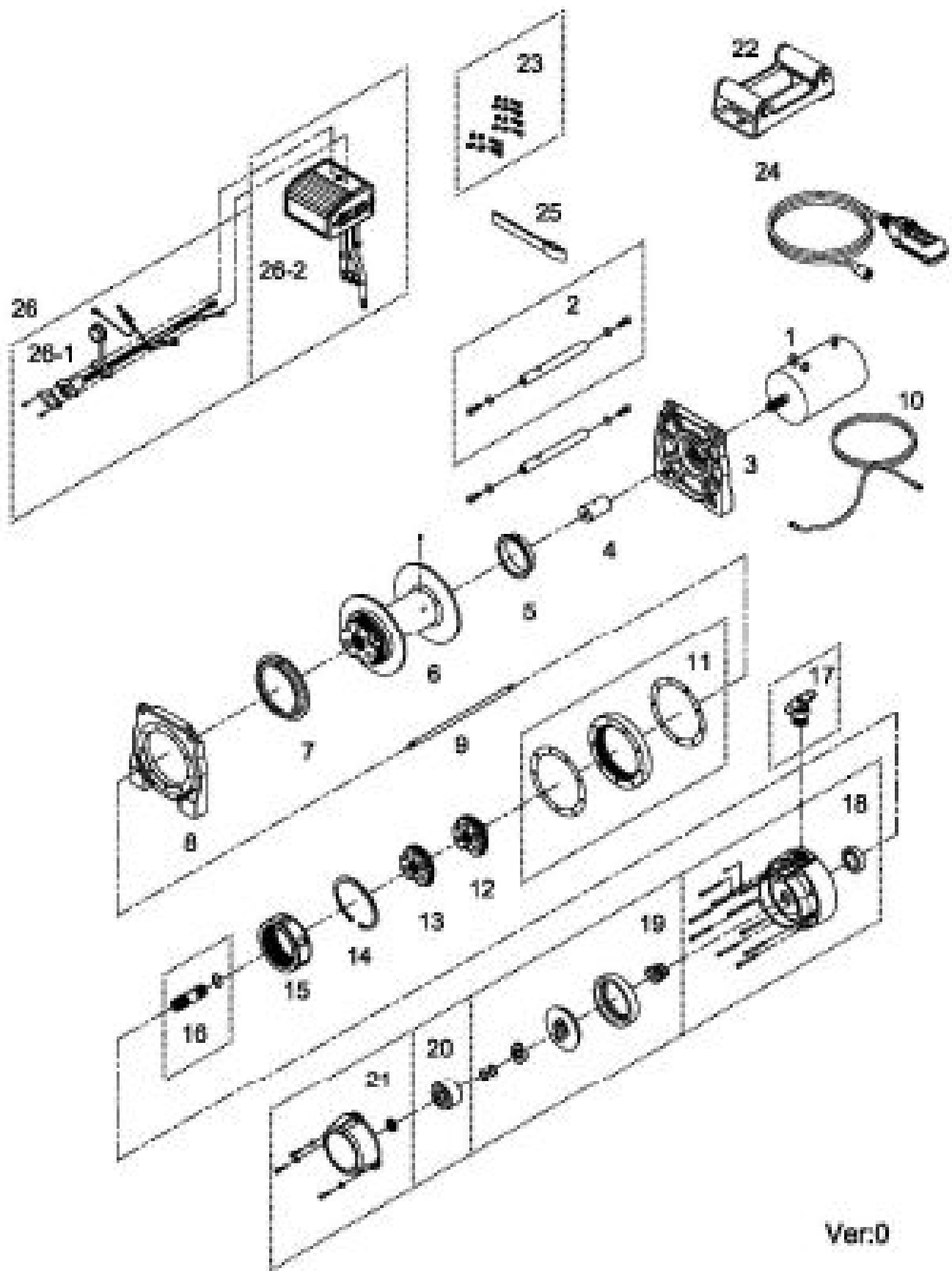


No	PN	Description	Qty
1	883197	Motor 12V; 2390w/3.2hp, series wound motor; Matte black	1
2	880076	Tie bar kit	2
3	883193	Motor support rack	1
4	880079	Motor coupling	1
5	880006	Drum bushing	1
6	882007	Drum kit, 72 mm diameter	1
7	880081	Drum bushing B	1
8	882419	Gearbox support rack	1
9	880084	1st shaft	1
10	882040	Grounding lead	1
11	882420	3rd ring gear kit	1
12	880087	2nd stage carrier	1
13	880088	1st stage carrier	1
14	880089	Retaining ring	1
15	880090	1st & 2nd ring gear	1
16	880091	1st pinion kit	1
17	880092	Clutch kit	1
18	882421	Gear box kit	1
19	880094	Cone brake disc kit	1
20	881099	Brake clutch base	1
21	882422	Brake cover kit	1
22	880096	Roller fairlead	1
23	880097	Mounting hardware	1
24	882008	Remote control, PB-317 for NAV-4200	1
25	880026	Hand saver strap	1
26	882009	Detachable control box 12V for NAV-4200	1
26-1	880029	Remote socket kit	1
26-2	882011	Detachable control pack 12V for NAV-4200	1



Ver.0